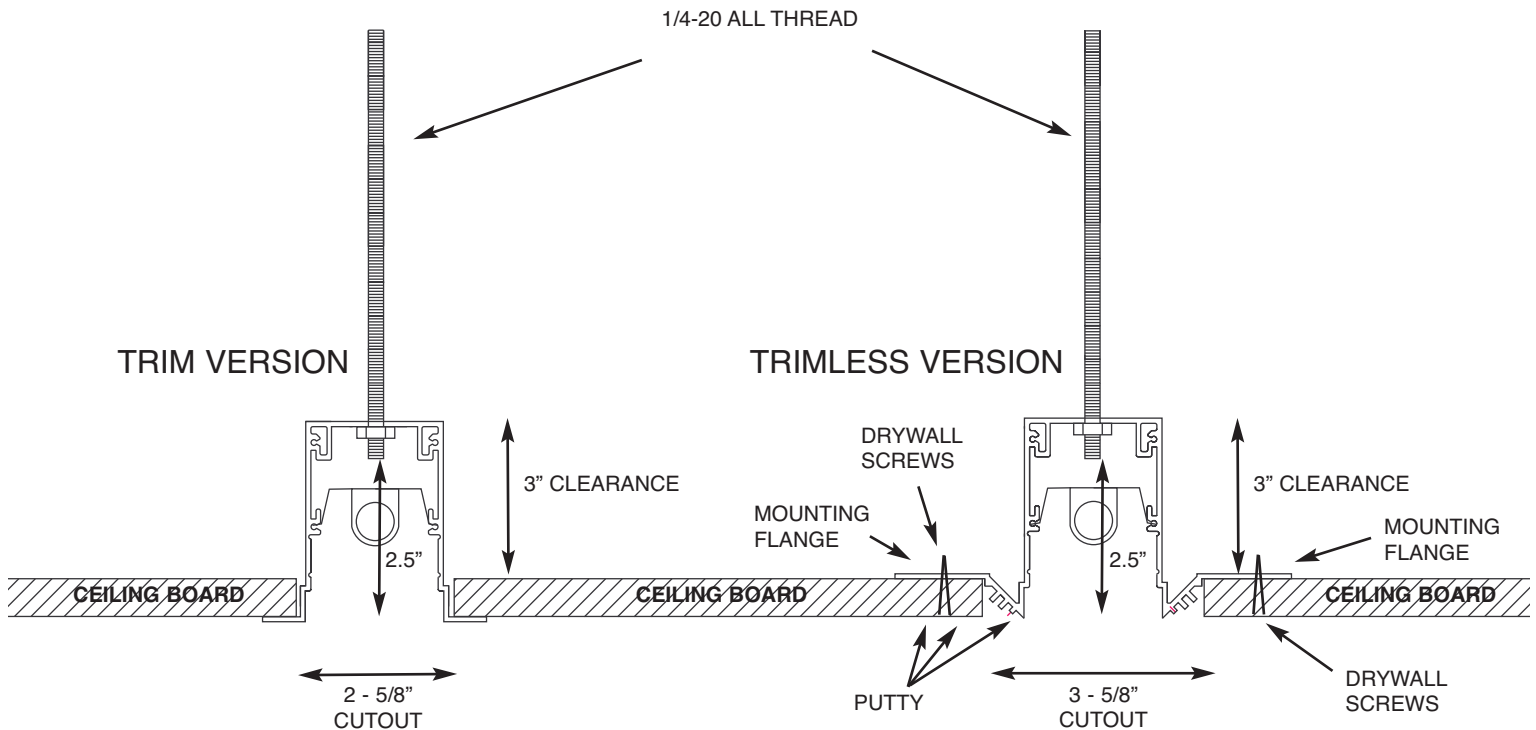


1/4-20 ALL-THREAD STYLE MOUNTING



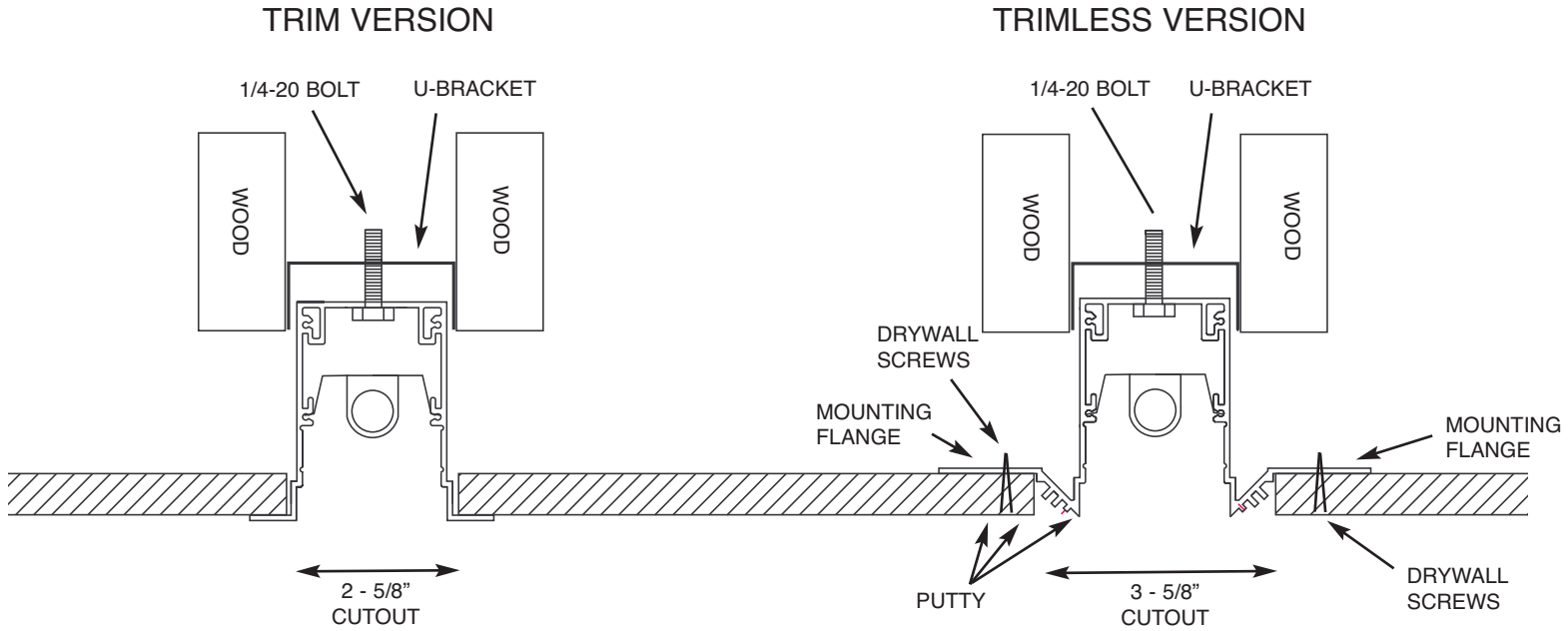
- **Lightplane Linear Recessed** is a Linear Strip Recessed fixture. Installation is done by utilizing the two 1/4" mounting holes (one on top of each end of a 2', 4', 6' or 8' linear strip fixture).
- The mounting holes are found on top and six inches from the end of each length of fixture.

- To install, drop **1/4-20 ALL-THREAD** (supplied by others) from a structural element above fixture (supplied by others). Position the bottom end of the rod to be 2.5" above the visible ceiling plane. (see drawing)

Alternate method

- Install the supplied **U-BRACKET** (see drawing) to wood with wood screws. The fixture will be installed to the U-BRACKET with 2 1/4-20 threaded bolts. The bracket is to be installed so it's cross member is 4" above the visible ceiling plane
- Raise the fixture to position and make electrical connections.
- **Trim version:** Install the fixture & tighten the (1/4-20 BOLTS to the installed U-BRACKET) or (nuts onto 1/4-20 ALL-THREAD) until the fixture trim is snug to the CEILING BOARD.
- **Trimless:** Install the fixture & adjust the (1/4-20 BOLTS to the installed U-bracket) or (nuts onto 1/4-20 ALL-THREAD) until the fixture's MOUNTING FLANGE is resting at the level of the top plane of the CEILING BOARD (see drawing).
- Install the CEILING BOARD up to the fixture's MOUNTING FLANGES. Adjust the (1/4-20 bolts) or (nuts onto 1/4-20 all-thread) if necessary so fixture is just resting on the installed ceiling board.
- Drill screw starter holes all along the fixture's length up through the CEILING BOARD and through the fixtures aluminum MOUNTING FLANGES. Fasten the CEILING BOARD to the MOUNTING FLANGES with DRYWALL SCREWS.
- PUTTY over the DRYWALL SCREWS and up to the fixtures edge to finish. (see drawing)

U-BRACKET STYLE MOUNTING



IMPORTANT SAFETY INSTRUCTIONS

When installing this fixture basic safety precautions should be followed.

Read ALL INSTRUCTIONS before installing the fixture.

- This fixture is intended for installation in accordance with the National Electric Code and Local and State Codes and must be installed by a licensed electrical contractor.
- DO NOT INSTALL THIS FIXTURE IN DAMP LOCATIONS
- To prevent electrical shock, turn off electricity at fuse box before installing the fixture,
- Use AWG#12 wire only for supply to the fixture.

SAVE THESE INSTRUCTIONS

ARCHITECTURAL LIGHTING WORKS
800 WARRINGTON AVENUE
REDWOOD CITY, CA 94063
650-298-0412

